

Lateral Pin Kit

A useful addition to the SOLOPro+ pipeline inspection system. Used exclusively with the Pan & Rotate camera (CAM026), simply attach the pin to allow the inspection of incoming lateral pipe. The pin adjusts the direction and guides the camera smoothly along the pipe. The kit comes with three sizes of pin small 150mm (6in), medium 225mm (9in) large 300mm (12in), fixings and full instructions.



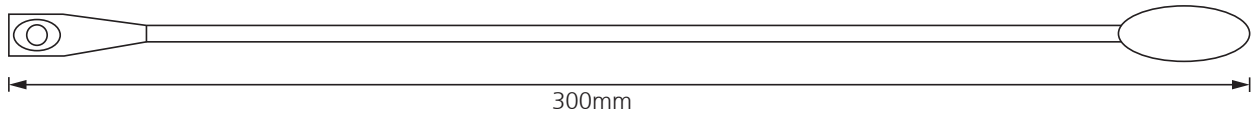
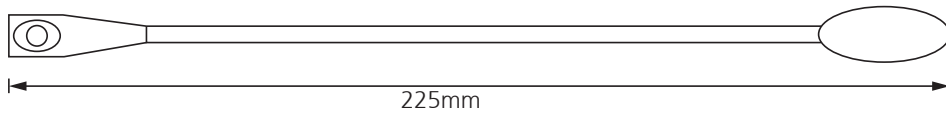
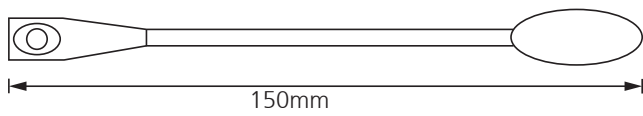
Compatibility



Technical Data

Small Pin Length	150mm
Medium Pin Kit	225mm
Larger Pin Kit	300mm
Fixings	6 Screws
Case	Foam lined with snap lock lid
Compatibility	Proteus / SOLOPro+

Later Pin Kit



Lateral Pins

Three sizes of pin small 150mm (6in), medium 225mm (9in) large 300mm (12in), fixings and full instructions included.



Attached



Kit Case

112021 © 2022 Minicam

